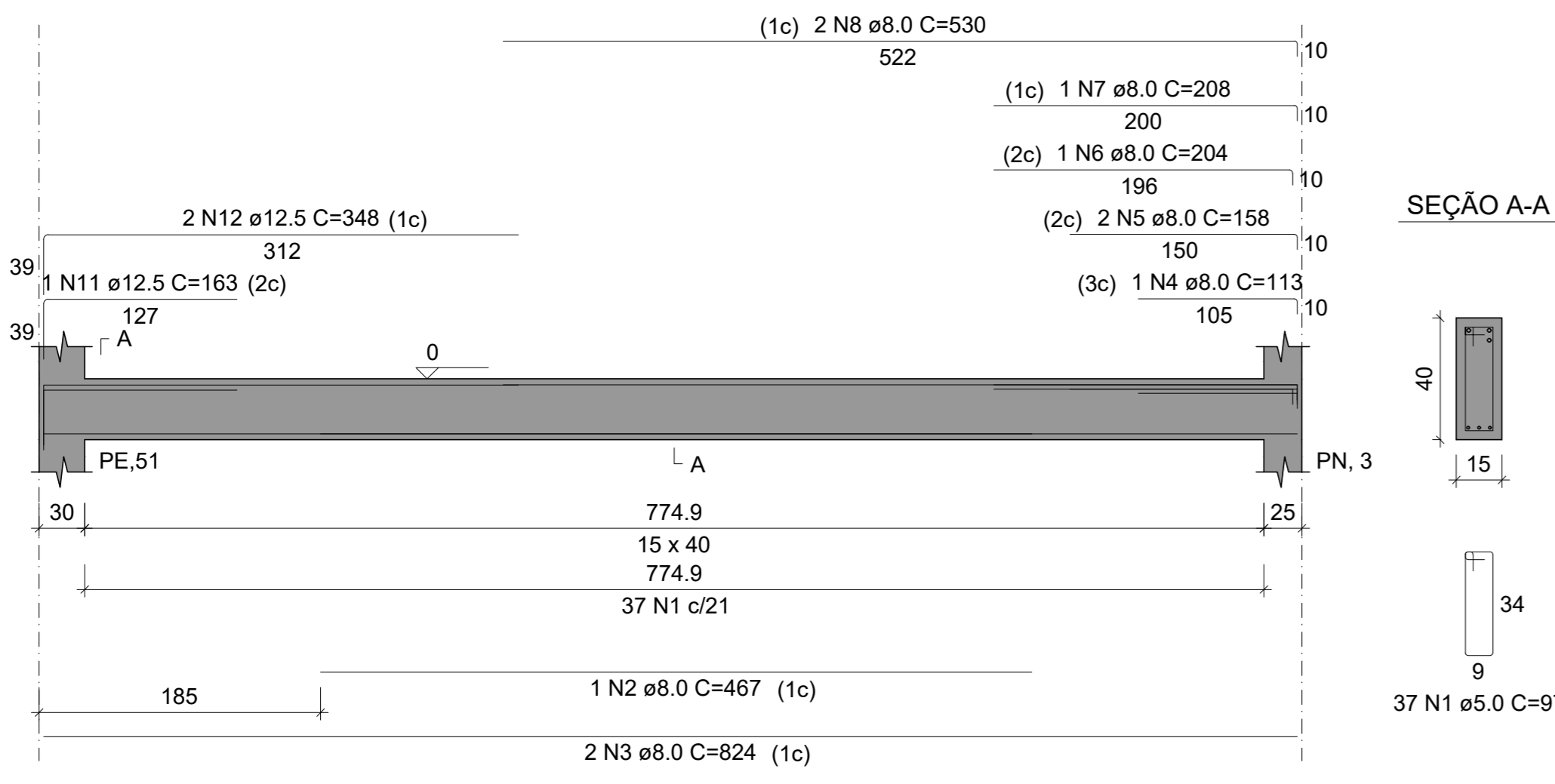
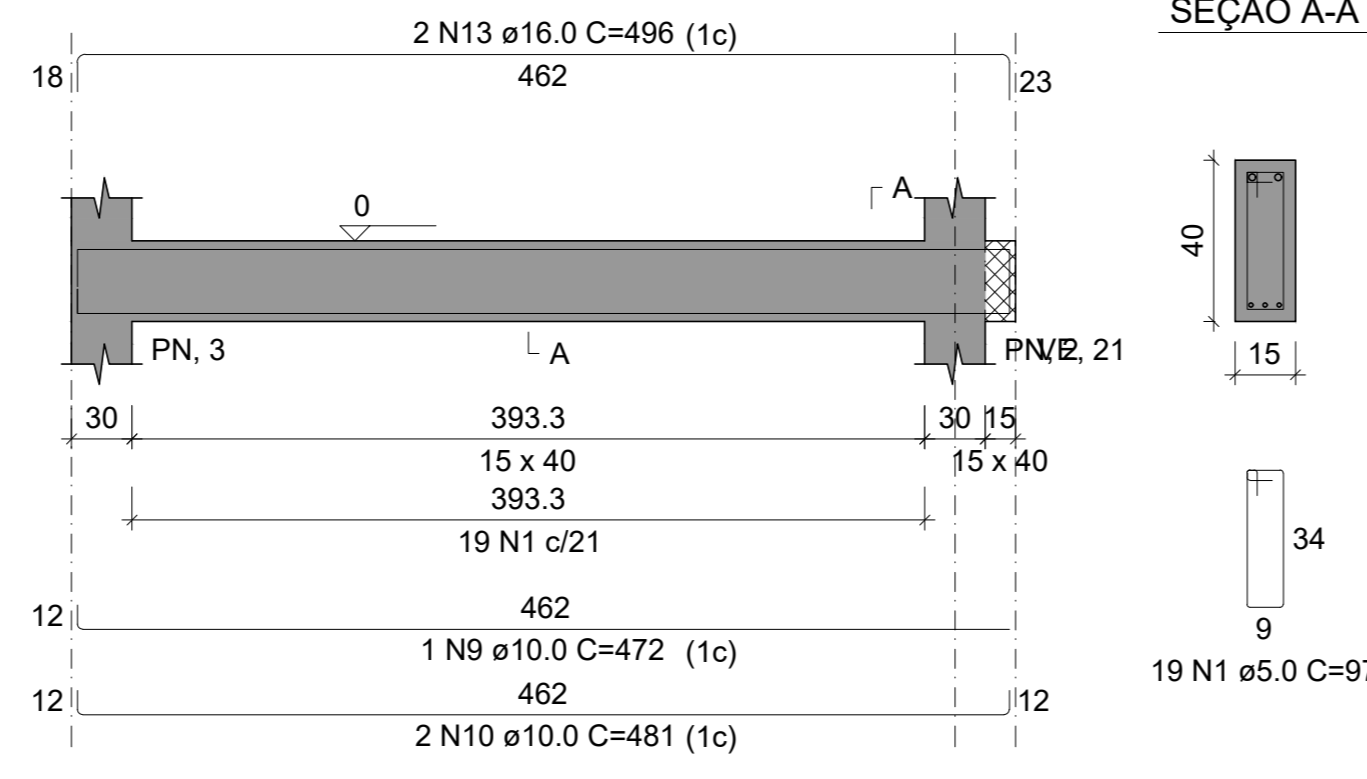


Vigas Baldrames Novas

VN, 1
ESC 1:50



VN, 2
ESC 1:50



RELAÇÃO DO AÇO

ÁÇO	N	DIAM (mm)	QUANT	C.UNIT (cm)	C.TOTAL (cm)
CA60	1	5.0	56	97	5432
CA50	2	8.0	1	467	467
	3	8.0	2	824	1648
	4	8.0	1	113	113
	5	8.0	2	158	316
	6	8.0	1	204	204
	7	8.0	1	208	208
	8	8.0	2	530	1060
	9	10.0	1	472	472
	10	10.0	2	481	962
	11	12.5	1	163	163
	12	12.5	2	348	696
	13	16.0	2	496	992

RESUMO DO AÇO

ÁÇO	DIAM (mm)	C.TOTAL (m)	PESO + 10% (kg)
CA50	8.0	40.2	17.4
	10.0	14.3	9.7
	12.5	8.6	9.1
	16.0	9.9	17.2
CA60	5.0	54.3	9.2
PESO TOTAL (kg)			
CA50		53.5	
CA60		9.2	

Volume de concreto (C-30) = 0.78 m³
Área de forma = 12.33 m²

RELAÇÃO DO AÇO

ÁÇO	N	DIAM (mm)	QUANT	C.UNIT (cm)	C.TOTAL (cm)
CA60	1	5.0	99	117	11583
	2	5.0	2	297	594
	3	5.0	2	612	1224
	4	5.0	8	75	608
	5	5.0	5	127	635
	6	5.0	28	97	2716
	7	5.0	4	86	344
	8	5.0	356	51	18156
	9	5.0	2	562	1124
	10	6.3	6	85	510
	11	6.3	6	75	450
	12	6.3	6	147	882
	13	6.3	4	133	532
	14	8.0	3	75	225
	15	8.0	3	114	342
	16	8.0	3	173	519
	17	8.0	3	160	480
	18	8.0	1	85	85
	19	8.0	1	193	193
	20	8.0	6	598	3588
	21	8.0	2	864	1728
	22	8.0	2	900	1800
	23	8.0	2	883	1766
	24	8.0	2	91	182
	25	8.0	1	128	128
	26	8.0	2	273	546
	27	8.0	2	475	950
	28	8.0	2	500	1000
	29	8.0	2	299	598
	30	8.0	2	333	666
	31	8.0	2	582	1164
	32	10.0	1	227	227
	33	10.0	2	287	574
	34	10.0	1	293	293
	35	10.0	1	350	350
	36	10.0	2	356	712
	37	10.0	4	101	404
	38	10.0	1	195	195
	39	10.0	1	659	659
	40	10.0	2	665	1330
	41	10.0	1	210	210
	42	10.0	2	630	1260
	43	10.0	8	91	728
	44	10.0	1	119	119
	45	12.5	1	437	437
	46	12.5	1	823	823
	47	12.5	2	826	1652
	48	12.5	1	245	245
	49	12.5	2	249	498
	50	12.5	2	329	658
	51	12.5	1	482	482
	52	12.5	2	861	1722

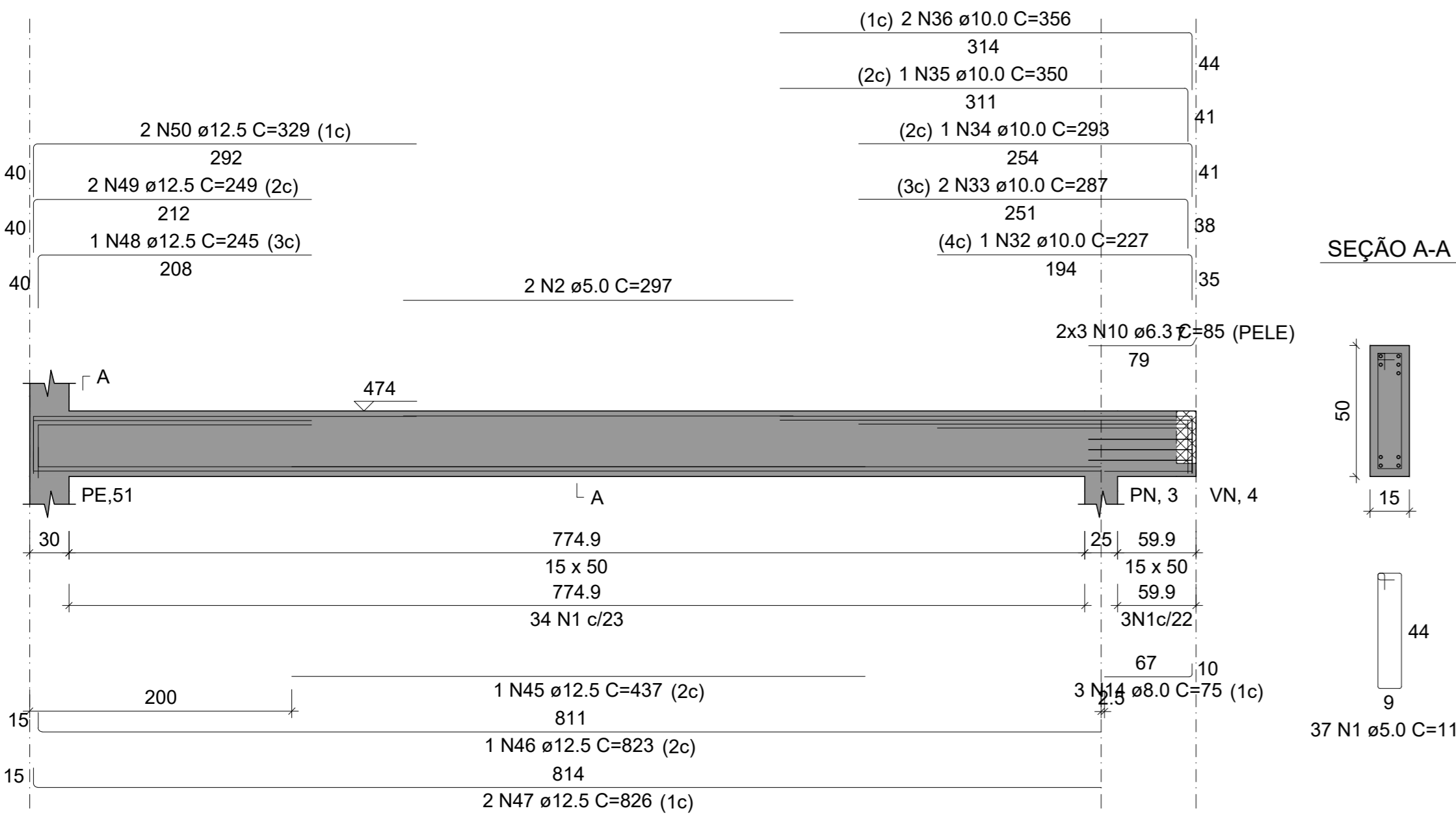
RESUMO DO AÇO

ÁÇO	DIAM (mm)	C.TOTAL (m)	PESO + 10% (kg)
CA50	6.3	23.7	6.4
	8.0	160	69.4
	10.0	70.6	47.9
	12.5	65.2	69.1
CA60	5.0	369.8	62.7
PESO TOTAL (kg)			
CA50		192.8	
CA60		62.7	

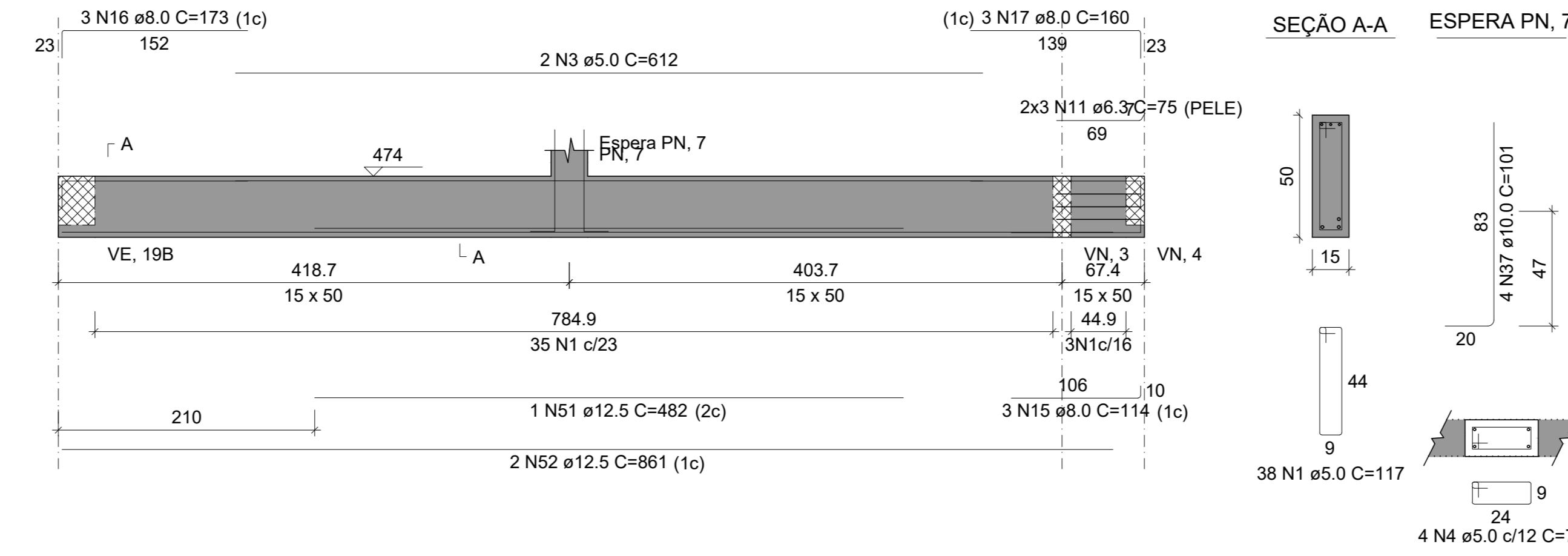
Volume de concreto (C-30) = 2.88 m³
Área de forma = 49.17 m²

Vigas de Cobertura e Platibanda

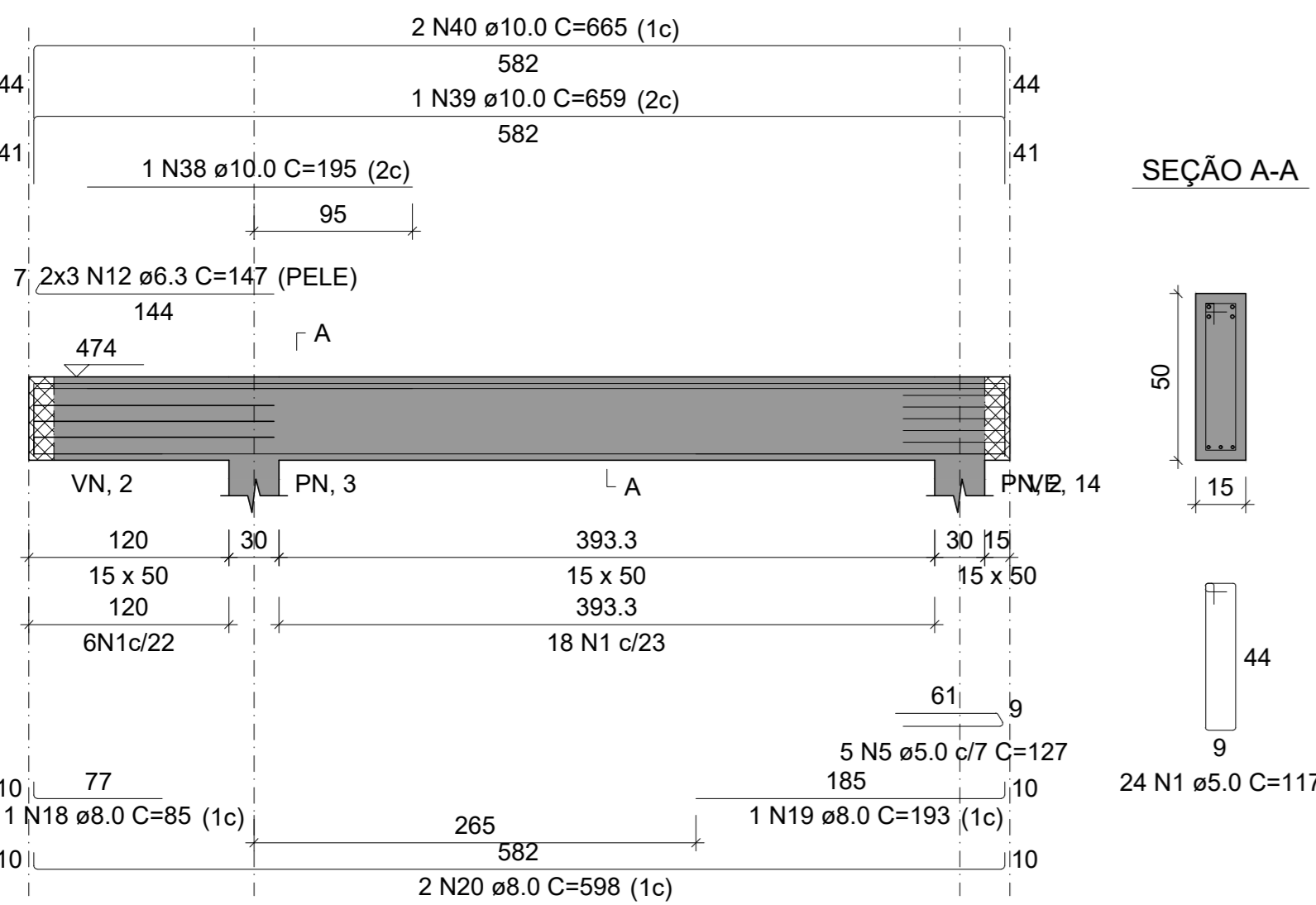
VN, 1



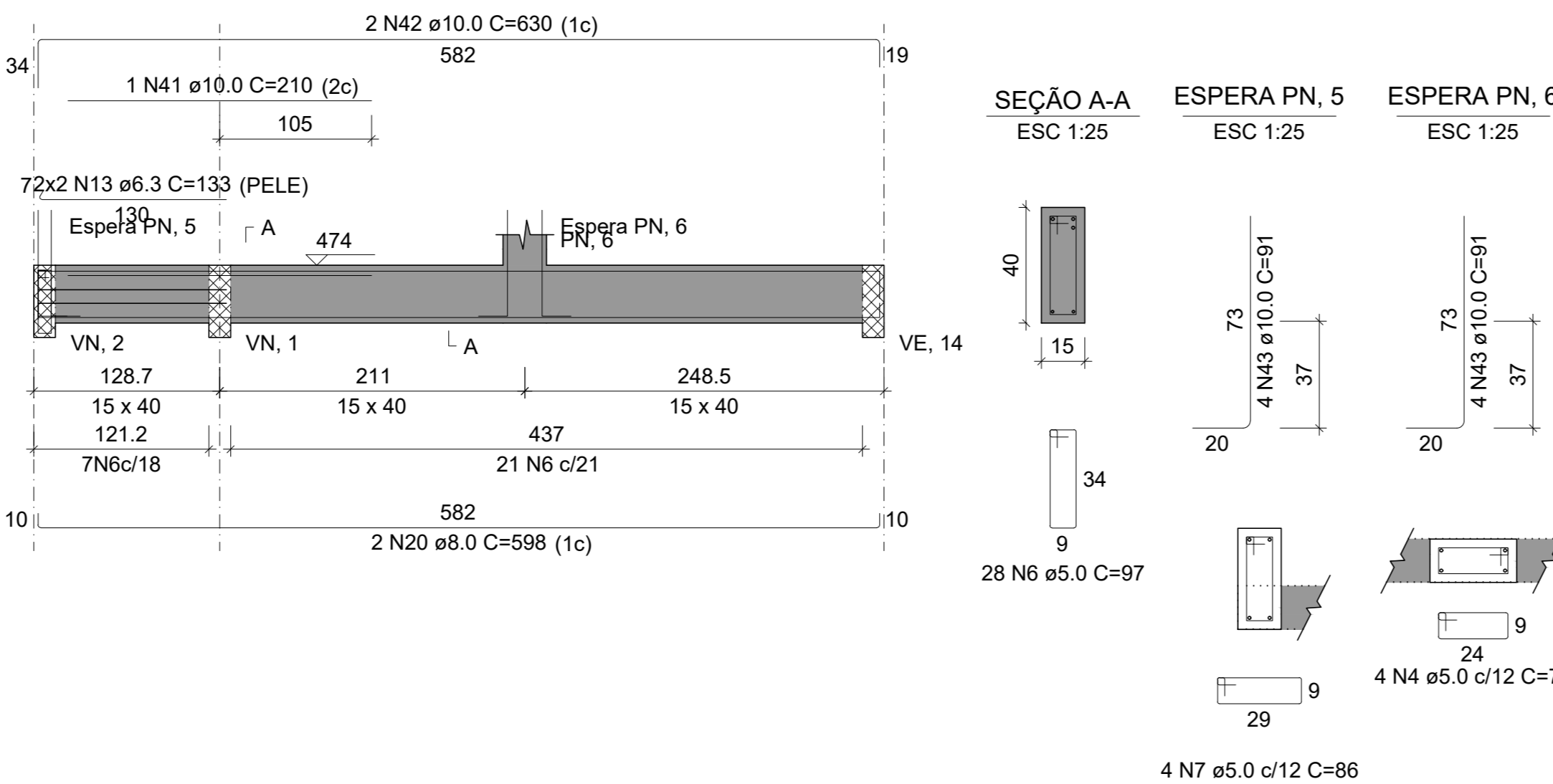
VN, 2



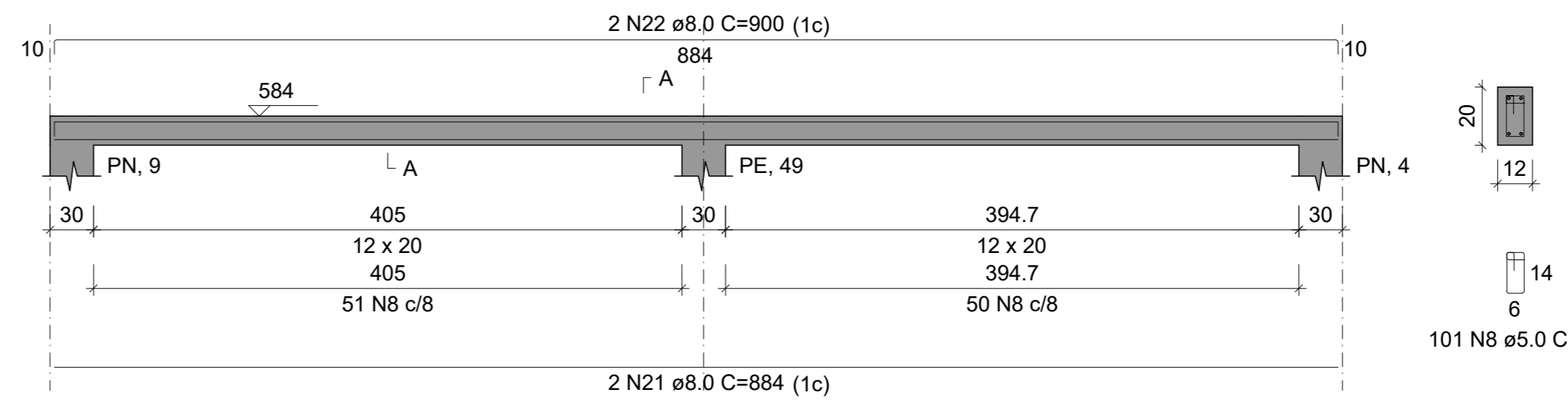
VN, 3



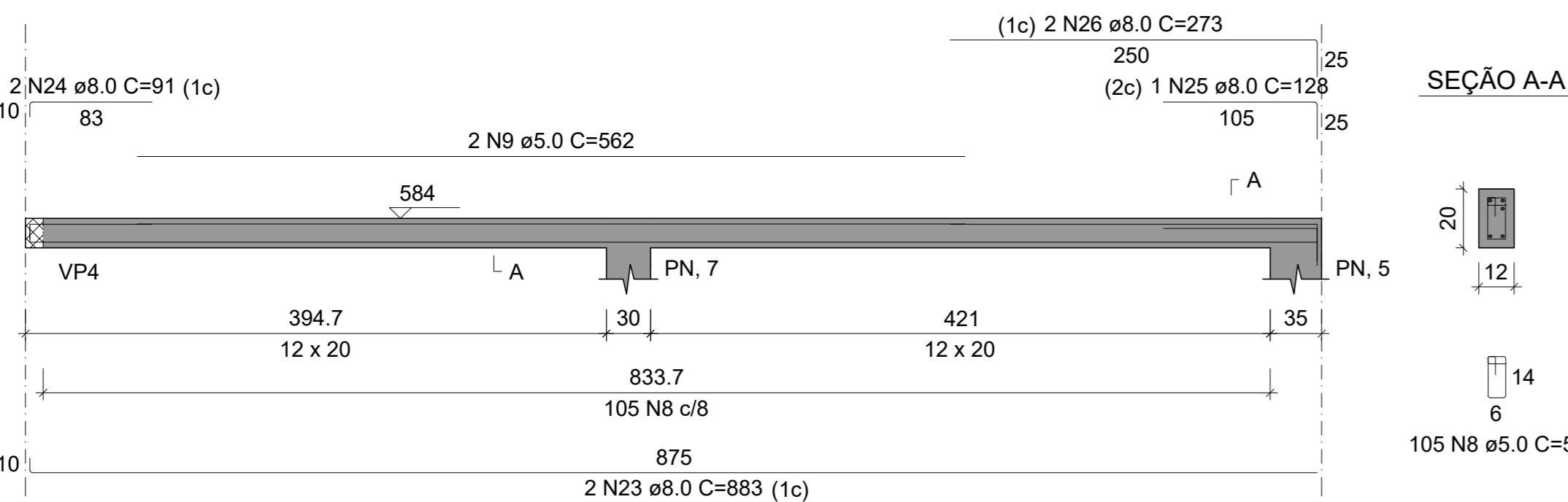
VN, 4



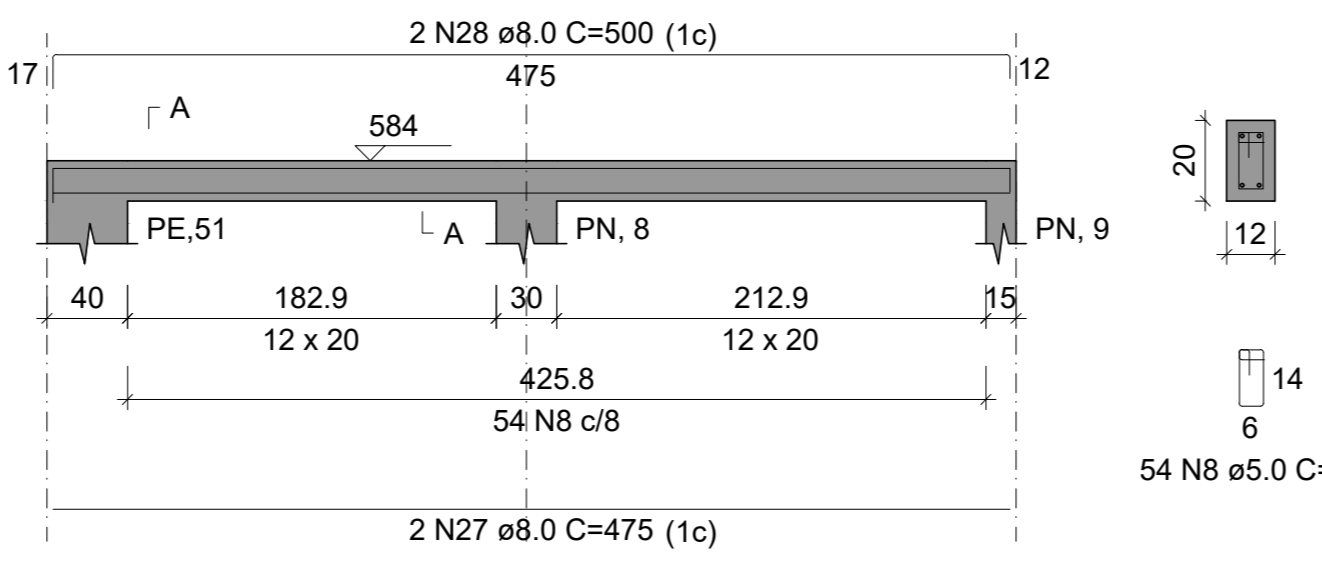
VP1



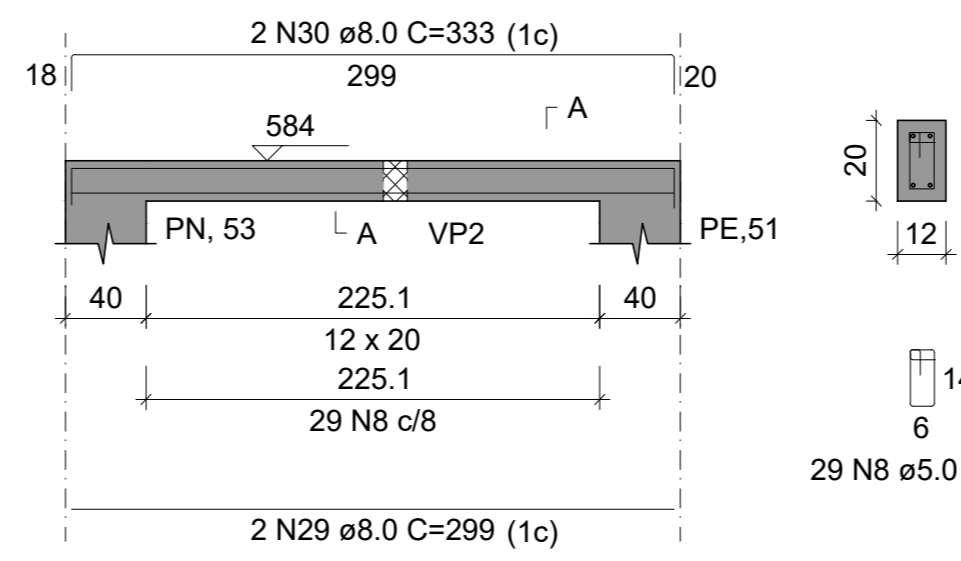
VP2



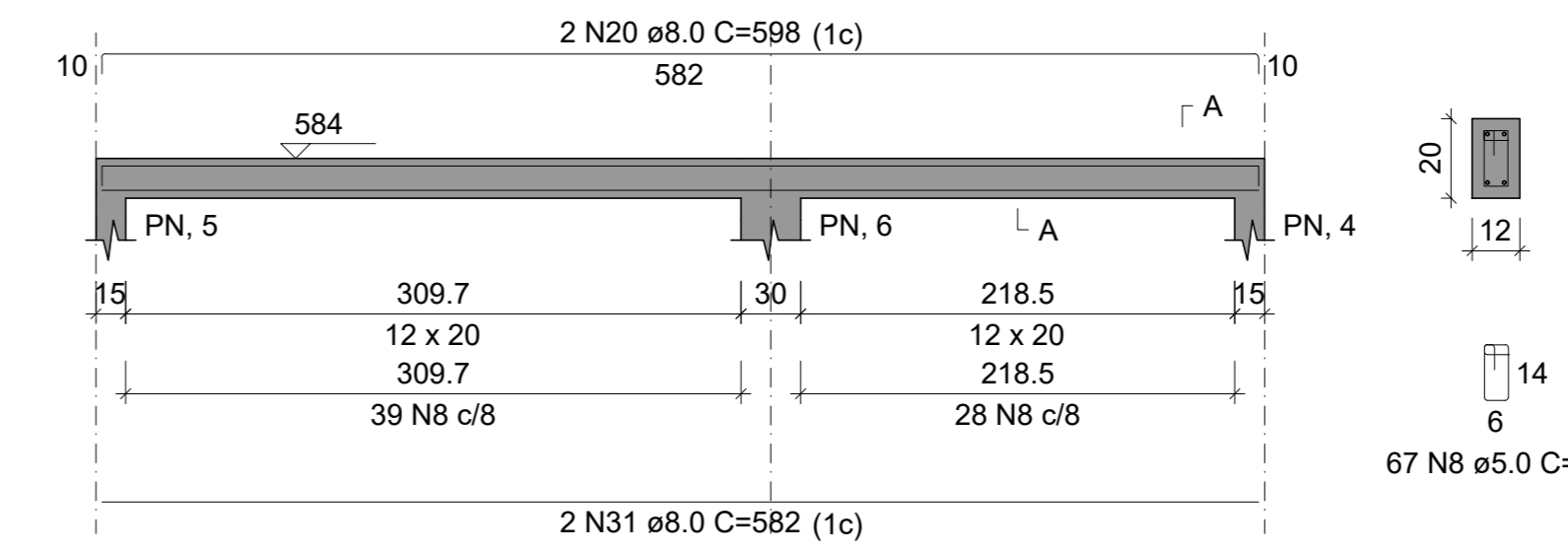
VP3



VP4



VP5



APROVAÇÃO:

ARQUITETURA

ENDERECO: AVENIDA JOÃO XXIII, Nº 538, CENTRO, CATALÃO/GO
CEP 75.701-485

RETOMADA DA CONSTRUÇÃO E ADEQUAÇÃO DA NOVA SEDE DO IPASC E PRÓ-SAÚDE

PROPRIETÁRIO: Responsável IPASC e Pró-Saúde: Karla Rosane Santos Rabelo

AUTOR DO PROJETO: Engenheiro Civil Wallias Coimbra Soares - CREA 26931/D-DF

RESPONSÁVEL TÉCNICO:

CONTEUDO: Detalhamento de Vigas

ÁREA DO TERRENO: 548,30 m²

ÁREA CONSTRUÍDA: 314,89 m²
P. TERREO (PRÓ SAÚDE): 314,89 m²
P. SUP. 01 (IPASC): 287,15 m²
P. SUP. 02 (TERRAÇO): 154,82 m²
ÁREA TOTAL: 817,22 m²

ESCALA: UNIDADE

04/05

ESTRUTURAL
GESTÃO PARA MUNICÍPIOS