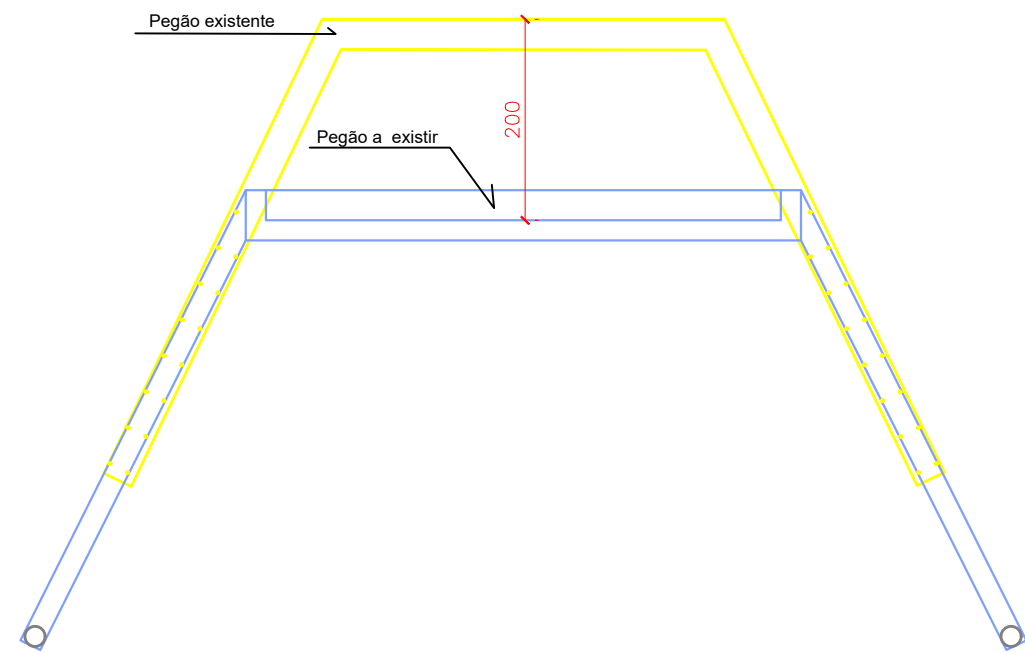
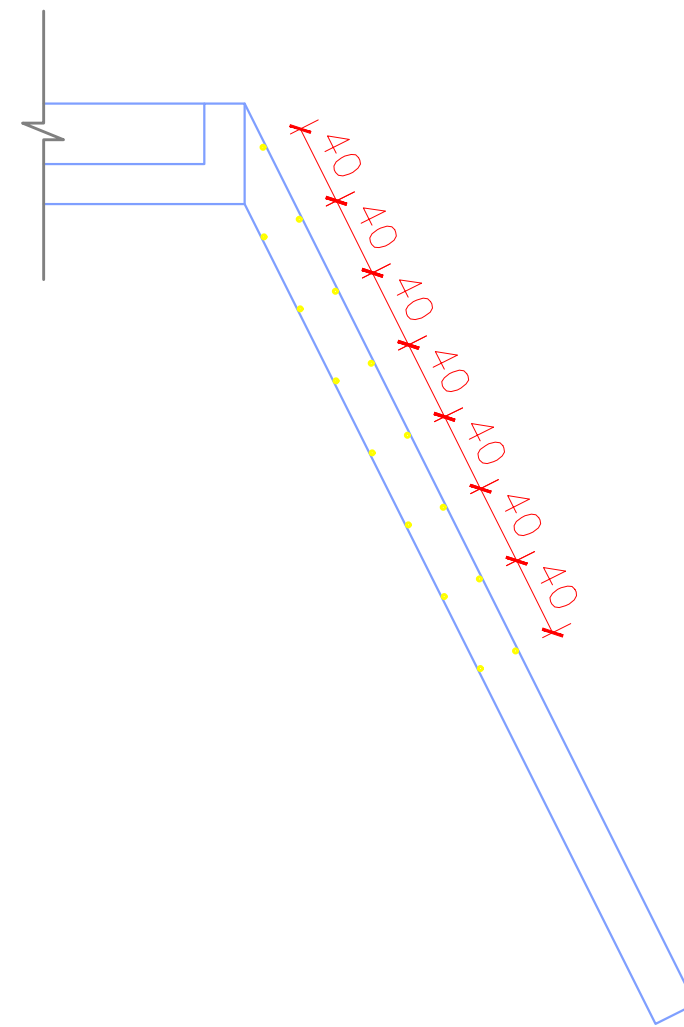


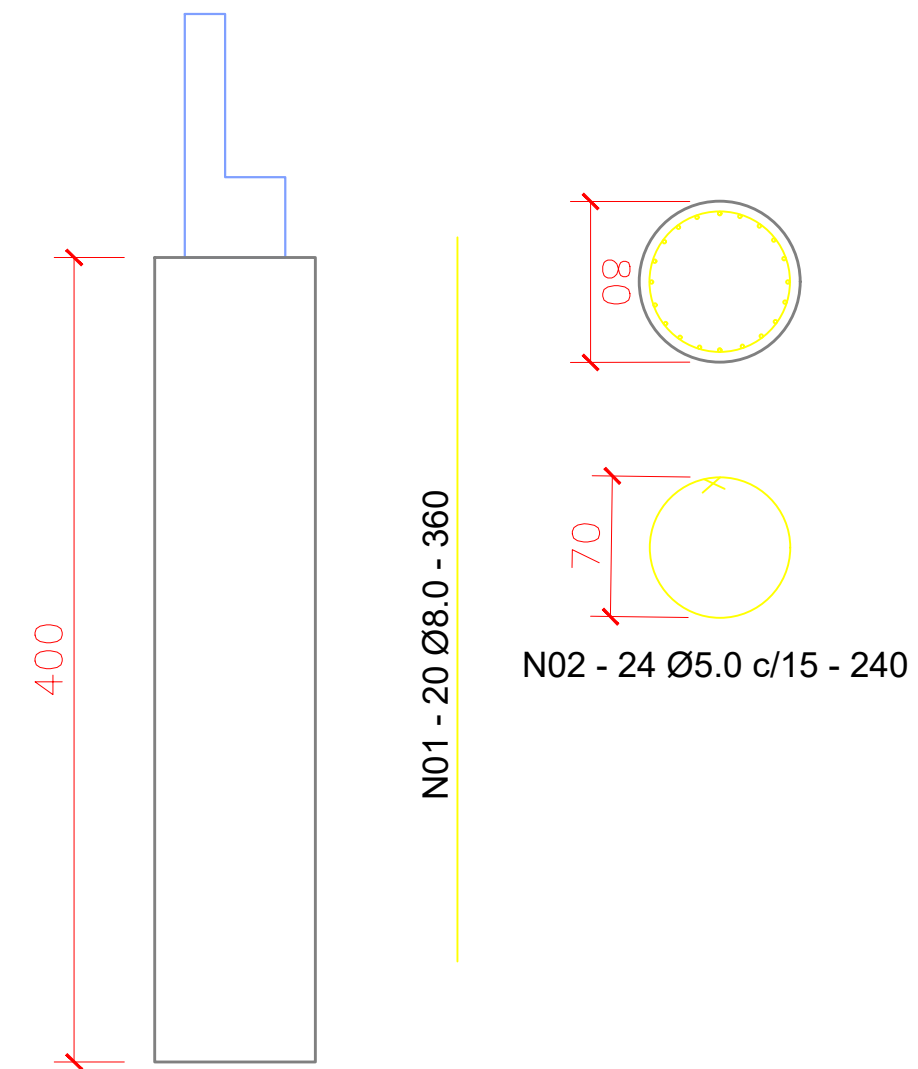
TRANSVERSINA CORTINA (X2)
Esc.: 1/50



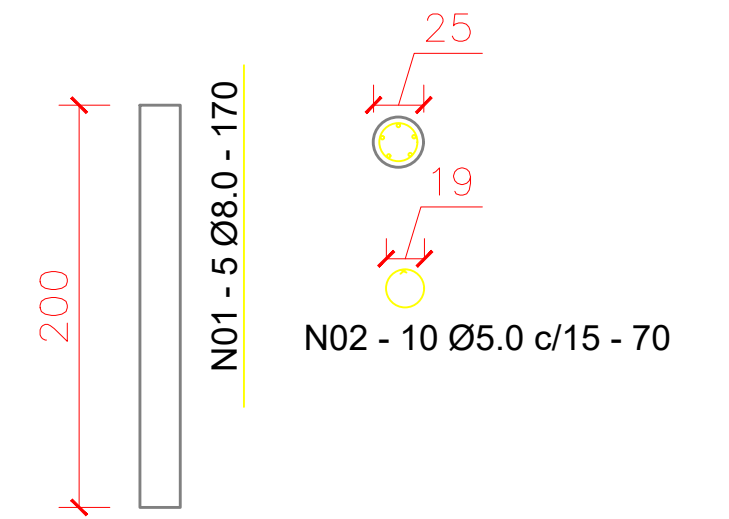
CHUBADORES $\phi 20 - C=60\text{cm}$ (X4)
Esc.: 1/50



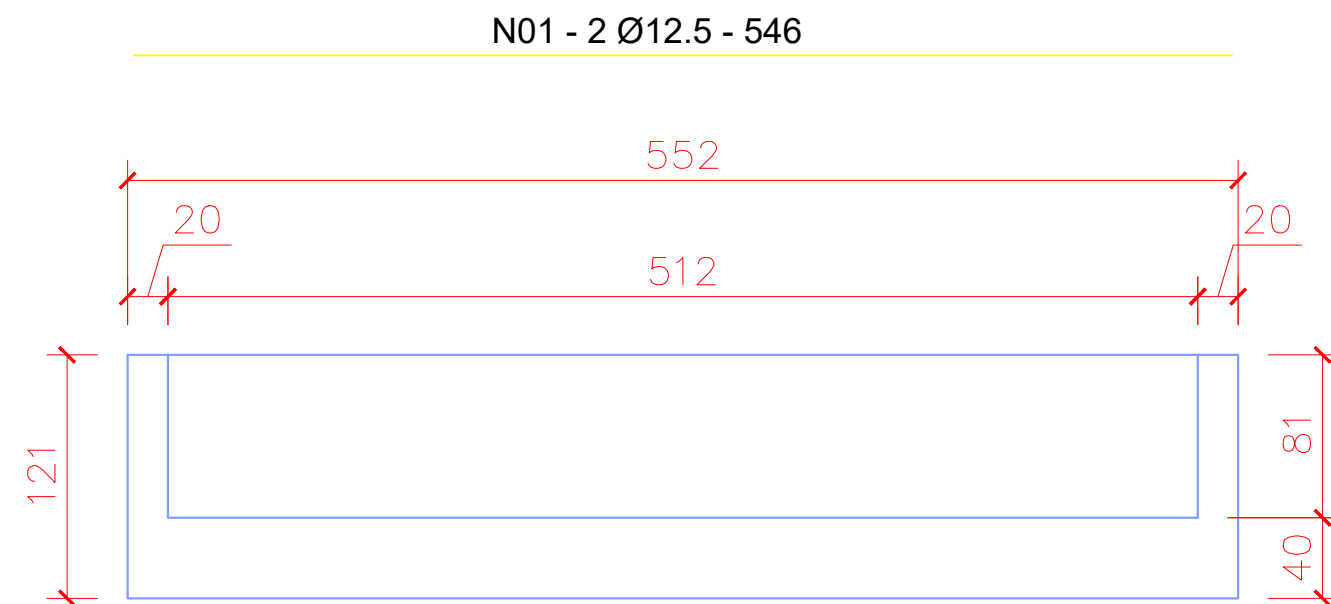
TUBULÃO (X4)
Esc.: 1/50



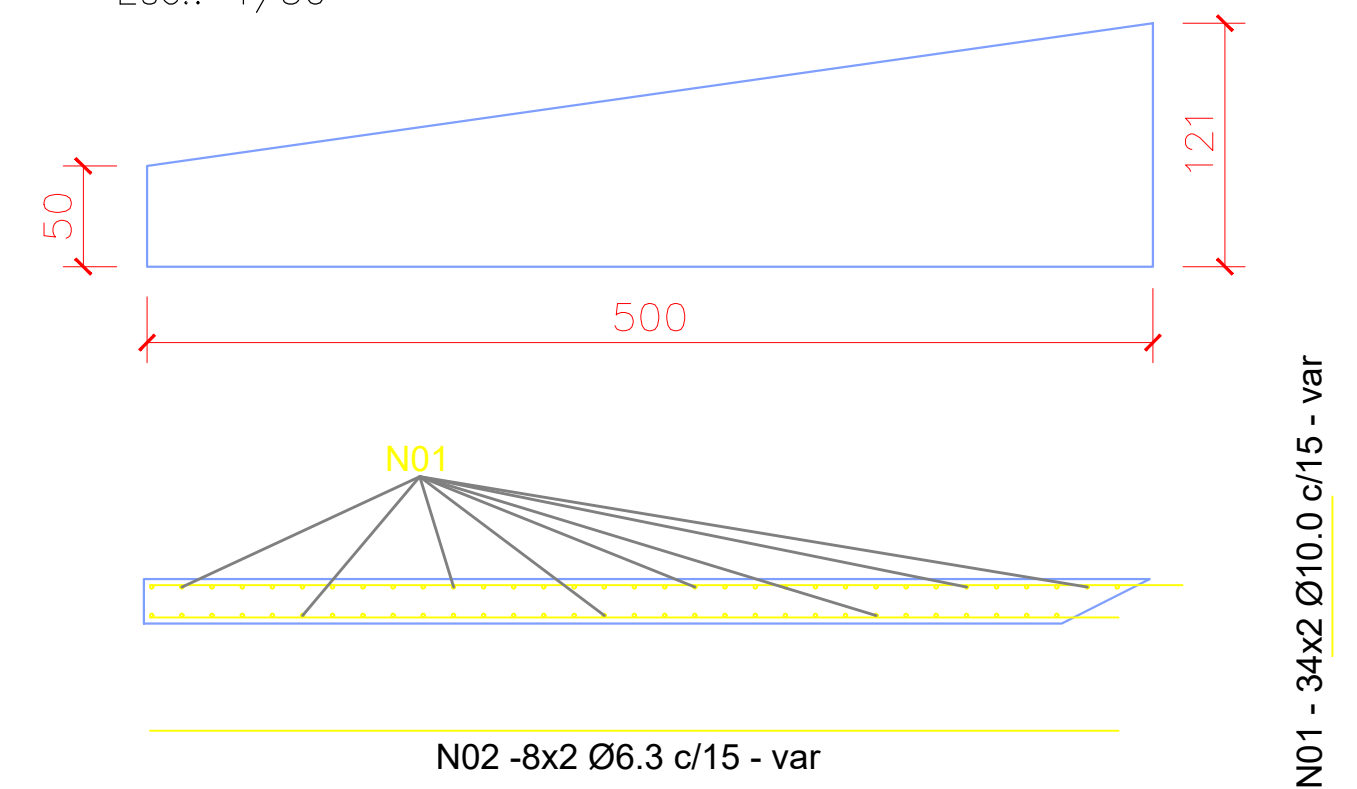
ESTACA (X4)
Esc.: 1/50



TRANSVERSINA CORTINA (X2)
Esc.: 1/50



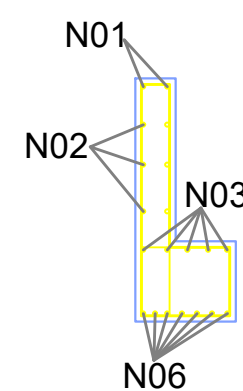
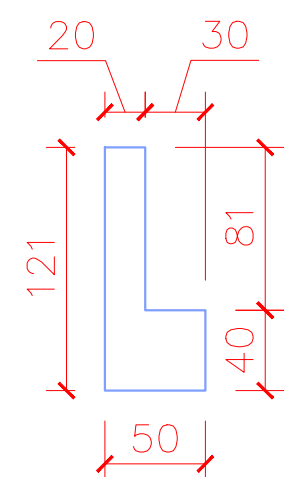
ALAS (X4)
Esc.: 1/50



N02 - 2x3 $\phi 10.0 - 546$ - costela

N03 - 5 $\phi 10 - 546$

N06 - 7 $\phi 12,5 - 546$



N04 - 36 $\phi 8.0$ c/15 - 280

N05 - 36 $\phi 8.0$ c/15 - 176


PREFEITURA DE CATALÃO
 Cidade que sonha e faz.

RESPONSÁVEL TÉCNICO: LEONARDO M. DE C. TEIXEIRA
 CREA: 7455/D-GO

PREFEITURA MUNICIPAL DE CATALÃO	
PROJETO ARQUITETÔNICO	ORIGEM: CATALÃO
OBRA: Ponte do Ribeirão Limoeiro	DATA: Junho/22
LOCAL/CIDADE: Santo Antônio do Rio Verde	REV.
CONTEÚDO: PROJETO DE REFORMA	ESCALA: INDICADA
	FRANCHA: 02/02